



Version 2002 Release Notes

Table Of Contents

- Overview 1
- Eligibility..... 1
- General V2002 Changes..... 1
- SolidView/Pro Changes 3
- CAD Interfaces..... 3
- Error Corrections..... 4

Overview

SolidView Version 2002 is a major enhancement release that also incorporates a number of error corrections. SolidView/Lite, SolidView, SolidView/Pro and SolidView/Pro RP are all included in this new release. Version 2002 includes changes that impact all of the SolidView products. The SolidView Solid File exchange (SFX) format has been modified in Version 2002. SFX files created in Version 2002 are not viewable in previous versions of SolidView.

Eligibility

Existing SolidView, SolidView/Pro, and SolidView/Pro RP users under warranty or covered by a Maintenance, Enhancement and Support (MES) agreement are eligible for a free upgrade to Version 2002. All users will require a new SolidView Program Key from their Authorized SolidView Reseller or Solid Concepts in order to enable SolidView after the installation process. Users can obtain a free 15-day evaluation program key from <http://www.solidview.com>.

General V2002 Changes

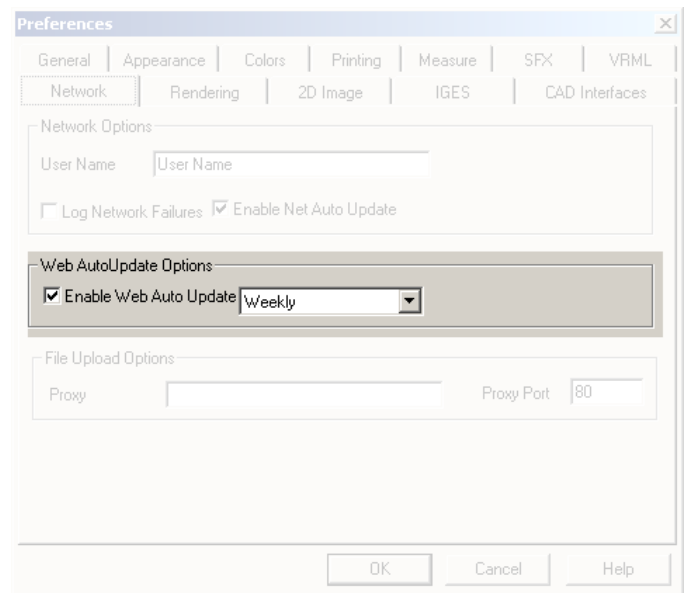
The changes to V2002 that effect all SolidView products are:

Auto Update

This new feature makes is easy to keep your SolidView installation up-to-date with the latest software from Solid Concepts. Based on settings you can modify under the **Network** tab in **File | Preferences**, SolidView will automatically connect to www.solidview.com to see if any updates are available for the software you have licensed.

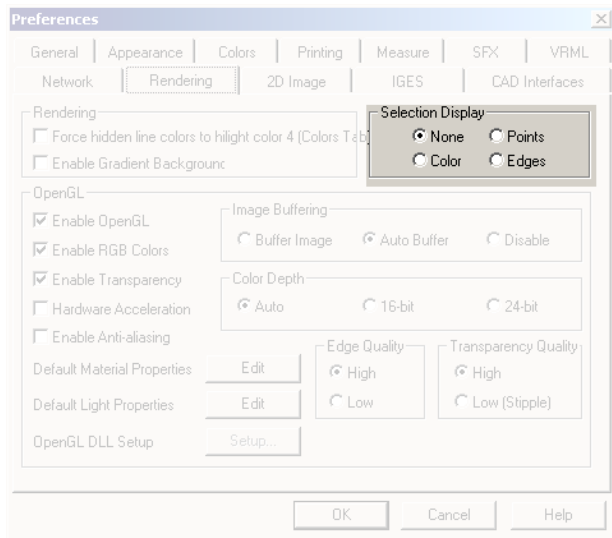
This could include error corrections, new CAD interfaces, new support files such as Help files, or minor enhancements. Users can manually look for updates using the **Help | Web | Check for Updates** menu item.

If any updates are available, users can quickly download and install the desired updates. Users running a network version of SolidView can check for updates, but the actual updates can only be installed by an administrator with access to the SolidView/Pro network server.



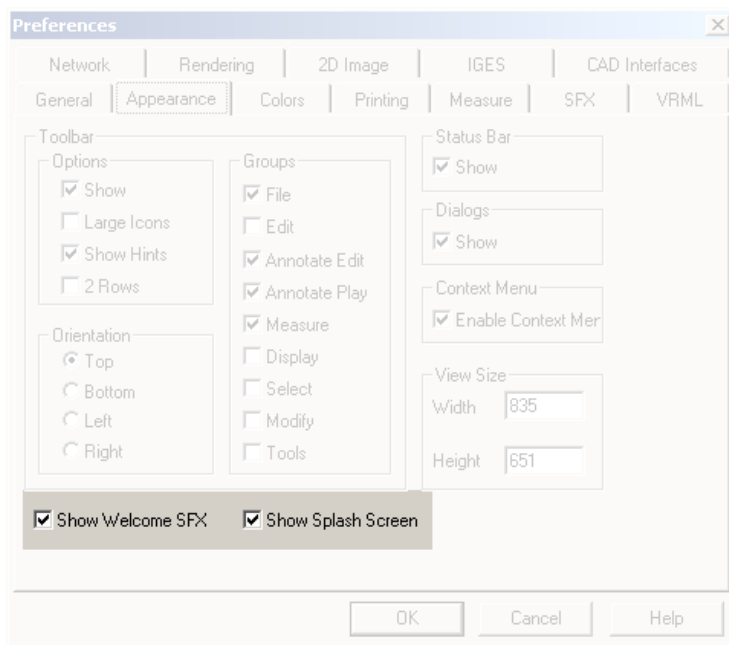
Selected Object Display

You can now change the way SolidView displays the selected object. In previous versions, the selected object was always displayed in a highlight color, however this makes it difficult to work with objects that have multiple colors, such as some VRML files. With SolidView 2002, you can use the **Rendering** tab in **File | Preferences** to change the selected object display from None (default) to Color, Edges, or Points.



Welcome SFX

SolidView can automatically download and display a “welcome.sfx”. This file is updated by Solid Concepts and is automatically downloaded during the Auto Update process. You can disable the welcome.sfx display and the SolidView splash screen display from the **Appearance** tab in **File | Preferences**.



SolidView/Pro Changes

The following changes are included in Version 2002 of SolidView/Pro and SolidView/Pro RP. Note that the availability of some features may be dependent on the SolidView/Pro features you have licensed.

Batch Converter Option

The SolidView **Batch Converter** accepts command line arguments to load and process files and output converted files, images and measurement information. This makes it useful to invoke from .bat files, macro programs or from other programs such as a PDM system. For more information on the SolidView Batch Converter, see the SolidView Server Documentation file in the\INFO folder of the SolidView CD.

Directory Watch Server Option

The SolidView **Directory Watch Server** watches a set of directories and their sub-directories on a timed frequency basis, automatically loading and processing files and creating converted output files, images and measurement information to a corresponding set of output directories. Output directories and sub-directories are created as needed. The Directory Watch Server is ideally suited to provide automated conversion for viewing, communication and quoting for departments such as sales, sales support, purchasing, manufacturing planning and others.

Paint Tool

A **Paint** menu item has been added to the **Tools** menu. **Selecting Tools | Paint** will display the Paint Dialog. Using the Paint Dialog, you can select a paint tool to apply colors to objects, surfaces, faces and triangles.

Color information can be saved in .STL, .SFX, .PLY and VRML 2 format.



Offset Face

The SolidView/Pro RP Offset Face feature has been enhanced to allow a surface to be offset.

CAD Interfaces

The following changes are included in the SolidView/Pro V2002 CAD interfaces:

AutoCAD

Support for 2002 .dwg and .dxf files.

CATIA

Improved tessellation and support for multiple objects and larger files.

IGES

Improved tessellation and support for sub objects.

Parasolids

Support for Parasolids V13.

SolidEdge

Support for SolidEdge V11.

SolidWorks

Support for SolidWorks 2001Plus.

Error Corrections

The following problems reported in previous versions of SolidView are corrected in Version 2002:

Product/Option	Description
All SolidView	Modify Units incorrectly identified the current units.
All SolidView	Incorrect Face select. In some cases, SolidView failed to select the proper Face during measurement operations.
CATIA Interface	Opening read only files (such as files on a CD) failed.
CATIA Interface	Large (> 10Mb) files often failed to open.
CATIA Interface	CATIA Layer numbers were incorrect in Tools Surface Analysis .
SolidEdge Interface	SolidView would not recognize a SolidEdge file during drag and drop.
SolidView/Pro	Running a published SFX file that contains a copy of SolidView/Lite resulted in an “insufficient disk space” error if there was more than 2Gb of free disk space.
SolidView/Pro	Material density information missing.
VRML 2 Interface	SolidView ignored per vertex color information.
VRML 2 Interface	SolidView ignored the Prompt for Current Units setting.