

## Table Of Contents

|                             |   |
|-----------------------------|---|
| Overview.....               | 1 |
| Eligibility .....           | 1 |
| General V2003 Changes ..... | 1 |
| SolidView/Pro Changes.....  | 3 |
| CAD Interfaces .....        | 3 |
| Error Corrections .....     | 3 |

### Overview

SolidView Version 2003 is a major enhancement release that also incorporates a number of error corrections. SolidView/Lite, SolidView, SolidView/Pro and SolidView/Pro RP are all included in this new release. Version 2003 includes changes that impact all of the SolidView products. The SolidView Solid File exchange (SFX) format has been modified in Version 2003. SFX files created in Version 2003 are not viewable in previous versions of SolidView.

### Eligibility

Existing SolidView, SolidView/Pro, and SolidView/Pro RP users under warranty or covered by a Maintenance, Enhancement and Support (MES) agreement are eligible for a free upgrade to Version 2003. All users will require a new SolidView Program Key from their Authorized SolidView Reseller or Solid Concepts in order to enable SolidView after the installation process. Users can obtain a free 15-day evaluation program key from <http://www.solidview.com> or by clicking on the "Get Key" button in the SolidView registration dialog.

### General V2003 Changes

The changes to V2003 that effect all SolidView products are:

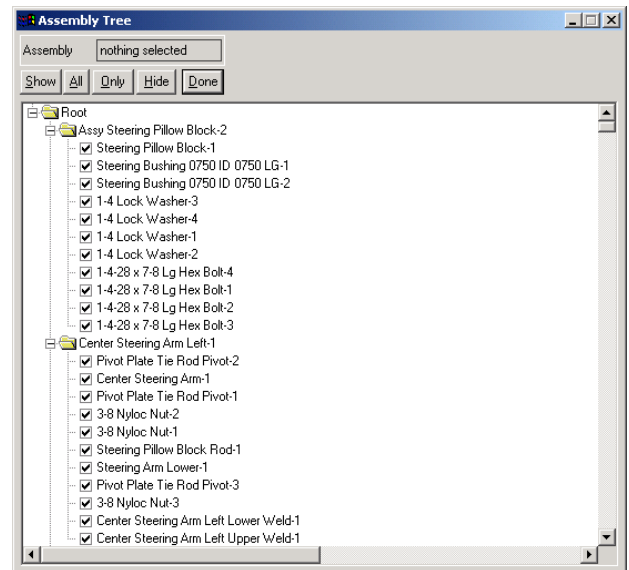
#### Floating Assembly Tree Dialog

The SolidView Assembly Tree dialog can now float in it's own window, making it possible to select items from the Assembly Tree dialog while another dialog, such as the **Modify | Move** dialog is active. To show the Assembly Tree dialog, select **Display | Assembly Tree**.

The floating Display Assembly Tree feature can be disabled using the Floating Assembly Tree option under the Appearance tab of the **File | Preferences** dialog.

Within the Assembly Tree dialog multiple objects can be selected using shift + left mouse click and cntl + left mouse click. Shift + left mouse click can be used to select a range of objects or subassemblies and cntl + left mouse click can be used to accumulate individual objects or subassemblies.

Please note that not all SolidView features support selecting multiple objects.

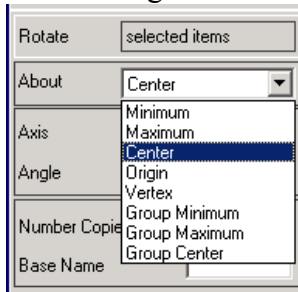


## Object Groups

The SolidView Select menu has been enhanced to support Object Groups. The **Select | Group Objects** menu will group the selected objects so that the SolidView Modify menu items can be used to modify the selected objects at one time. Multiple objects can be selected using the Assembly Tree dialog, or by using shift + left mouse to accumulate individually selected objects. The **Select | Ungroup Objects** menu item will remove the group association of any selected groups and **Select | Clear Groups** will remove all the groups in the current file.

## Multiple Object Modify

The **Modify | Move**, **Modify | Translate**, **Modify | Rotate**, **Modify | Align** and **Modify | Scale** menu items have been enhanced to support multiple objects. As part of this enhancement, the **Modify | Rotate** and **Modify | Scale** dialogs have been enhanced to support new "about" options. These new options include Group Minimum, Group Maximum and Group Center.



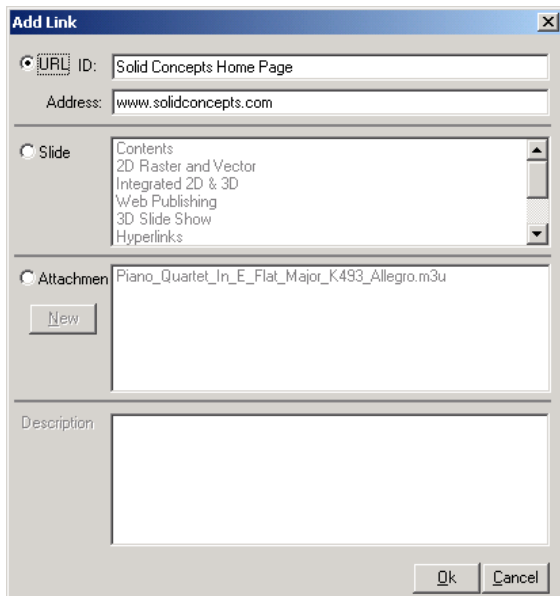
If "About Center" is selected in the **Modify | Scale** dialog, each object will be scaled about it's own center. If "Group Center" is selected, then each object will be scaled about the geometric center of the group.

## New Link Annotation Element

A new link annotation element has been added to SolidView. The link annotation element supports web addresses, SolidView slides and SFX file attachments. Link annotations can be created using the **Annotate |**



**Add Element | Link** menu item or by clicking on the Add Link toolbutton: Selecting **Annotate | Add Element | Link** or clicking on the Add Link toolbutton will display the add link pointer. A left mouse click is used to indicate the location of the link annotation and the Add Link dialog is displayed.



The Add Link dialog is used to specify the type of link and the actual link information. The link information for an existing link can be displayed and edited by double-clicking on the link icon.

Supported links are:

URL

Web: <http://www.solidview.com>

FTP: <ftp://ftp.solidconcepts.com>

File: <\\svcad\xfer>

Email: <mailto:support@solidview.com>

SolidView Slides

SFX Attachments

## **SolidView/Pro Changes**

The following changes are included in Version 2003 of SolidView/Pro and SolidView/Pro RP. Note that the availability of some features may be dependent on the SolidView/Pro features you have licensed.

### **Directory Watch Server**

A special monitor program has been added to the SolidView/Pro Directory Watch Server option. This program, in conjunction with other enhancements to the Directory Watch Server feature has greatly increased the reliability of the server. Additional enhancements added in this release include new post processing options.

## **CAD Interfaces**

The following changes are included in the SolidView/Pro V2003 CAD interfaces:

### **AutoCAD**

Support for ACIS V6 SAT files.

### **CATIA**

Improved tessellation.

### **I-Deas**

Support for 10NX.

### **IGES**

Improved tessellation.

### **Parasolid**

Support for Parasolid V14.

### **Pro/E**

Support for PTC Wildfire.

### **SolidEdge**

Support for SolidEdge V14.

### **SolidWorks**

Support for SolidWorks 2003.

### **SolidWorks Geometry**

Support for SolidWorks 2003.

### **Unigraphics**

Support for UG NX.

## **Error Corrections**

The following problems reported in previous versions of SolidView are corrected in Version 2003:

| <b>Product/Option</b> | <b>Description</b>  |
|-----------------------|---|
| DXF/DWG load          | A problem where some .dxf and .dwg files would not load has been corrected.   |
| DXF/DWG pan & zoom    | Some DXF and DWG files with incorrect extents information would not support Pan and Zoom in SolidView/Pro. SolidView/Pro has been modified to ignore incorrect extents information. |
|                       |   |